

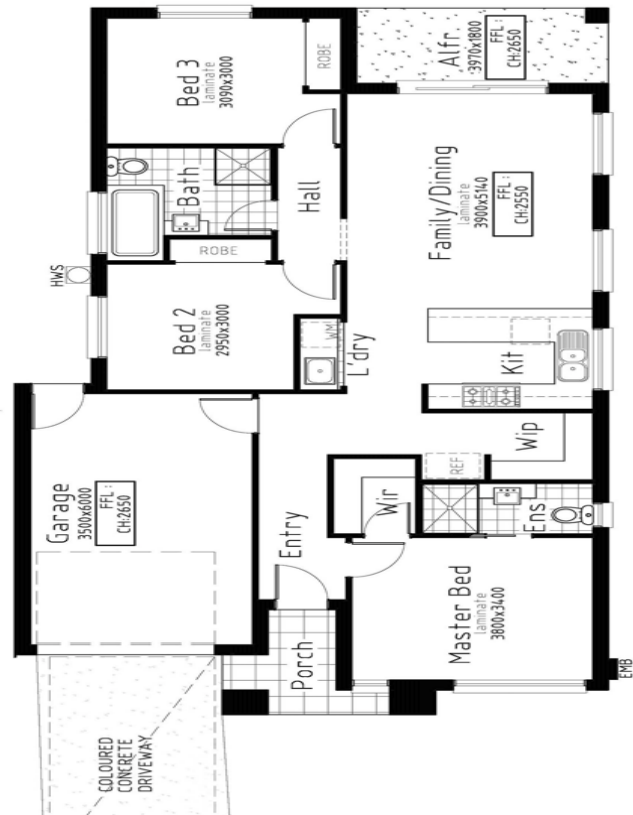


*Lot 305
House Size 15sqs*

*Parkbrook Estate, Wyndham Vale
Land Size 294m²(14x21)*

Turnkey Inclusions

- Customised Floorplans
- Fixed Site cost*
- Coloured Concrete Driveway
- Flooring throughout - Carpet and tiles
- LED lighting to Porch, entry, Kitchen, meals, Living & Bedrooms
- Brick infills above all windows & doors
- 2700mm ceiling heights
- Stone Benchtops to Kitchen & Bathrooms
- Ducted heating & Evaporative cooling
- Front landscaping
- Holland blinds & Recycle Water
- 900mm Appliances
- All Design guidelines covered
- Letterbox, clothesline, Half share fencing
- **And so much more....**



*Images displayed in this document are for illustration purposes only and may depicts upgraded items which are not included in the price. The price is based on land availability, inspection of the developer supplied engineering drawings, plans of subdivision and ASAC PROPERTY GROUP house floor plans. This package is subject to developer and council approval.